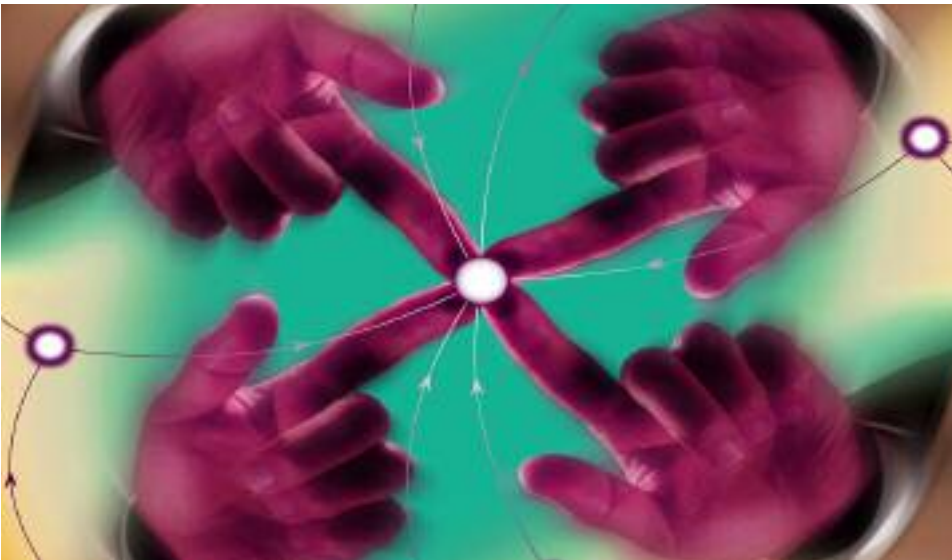


# ILOG DB Link

## Easy Interface to O/RDBMSs with C++



### Reliable access to data

ILOG DB Link is a set of lightweight libraries that provides easy, fast and reliable access to relational and object-relational data. Users can send or receive data directly to or from a database using only SQL.

### Easy to learn and apply

Easy to learn and apply, ILOG DB Link is SQL independent and portable across operating systems, making it a "develop once, port anywhere" solution for all mainstream Object/Relational Data Base Management Systems (O/RDBMSs).

### ILOG DB Link is also the ideal choice

ILOG DB Link is also the ideal choice for linking any application built with the other ILOG products to a database. ILOG R&D has maintained ILOG DB Link's advanced functionality, evolving the product as other ILOG software components are created or upgraded.

- **Portable database access and user code**
- **Transparent to SQL statements and data**
- **Support for multiple statement executions and connections**



## Portable database access and user code

ILOG DB Link includes native support for Informix, Open Ingres, Oracle and Sybase on UNIX and Windows platforms. It supports Microsoft SQL Server, Gupta SQL Base and ODBC on PCs. ILOG DB Link's application programming interface is platform and database independent, guaranteeing that application code is fully portable among the different versions of UNIX and Windows.

## Transparent to SQL statements and data

ILOG DB Link simplifies connection to O/RDBMSs by transparently handling SQL statements, even when they include proprietary extensions. It automatically passes SQL requests from C++ applications to O/RDBMSs, and supports transaction management, data handling, and access to data dictionaries.

ILOG DB Link can call stored procedures and apply multiple executions of parameterized queries. It supports large object handling, enabling C3I, GIS and text processing applications to use native data formats. Users can access internal O/RDBMS client structures when applications require specific O/RDBMS extensions.

Support for multiple statement executions and connections

ILOG DB Link allows users to simultaneously:

- Execute multiple requests
- Have multiple connections to an O/RDBMS
- Have multiple connections to assorted O/RDBMSs on a network

## See also ILOG Views Data Access

Portable database applications often need portable graphical user interfaces. ILOG Views Data Access, an ILOG Views module, uses ILOG DB Link to bring database data to the end user in an intuitive way. It features a C++ library and an editing studio for graphically building SQL statements and linking them to forms, tables, charts and other graphics. It is a leading choice for GUI applications that are portable across Windows, UNIX and databases.

## Learn more

**For more information about ILOG DB Link, please contact an ILOG Sales Representative near you or visit [www.ilog.com/products/dblink](http://www.ilog.com/products/dblink).**

*“We selected ILOG DB Link for its strength and its ease of use. With ILOG DB Link's intuitive interface, SQL programming is straightforward. This product stands above the competition.”*

**– Armand Giraud  
Development Engineer  
Hewlett Packard**



*“The application developed with ILOG Views and ILOG DB Link was one of the key factors that helped to improve the reject rate on the aluminum parts of the manufacturing line. We will use the same system for the ductile parts and we expect the same success.”*

**– Olivier Roffidal  
Manufacturing Manager  
Ductile Products**

## ■ ■ ABOUT ILOG

*ILOG delivers software and services that empower customers to make better decisions faster and manage change and complexity. Over 2,500 global corporations and more than 465 leading software vendors rely on ILOG's market-leading business rule management system (BRMS), optimization and visualization software components, to achieve dramatic returns on investment, create market-defining products and services, and sharpen their competitive edge. The BRMS market share leader, ILOG was founded in 1987 and employs more than 700 people worldwide.*

**ILOG Worldwide Information Center – Tel: 1-800-FOR-ILOG (US only) or 1-775-881-2800 (International) • URL: <http://www.ilog.com>**

**Australia** – ILOG Pty. Ltd. – Sydney – Tel. +61 (0)2 8249 4355 – E-mail: [info-au@ilog.com](mailto:info-au@ilog.com)  
**China** – ILOG (S) Pte. Ltd. – Beijing Representative Office – Tel. +86 10 8518 1080 – E-mail: [info@ilog.com.sg](mailto:info@ilog.com.sg)  
**France** – ILOG S.A. – Gentilly – Tel: +33 (0)1 49 08 35 00 – E-mail: [info@ilog.fr](mailto:info@ilog.fr)  
**Germany** – ILOG Deutschland GmbH – Bad Homburg v.d.H. – Tel: +49 6172 40 60 – 0 – E-mail: [info@ilog.de](mailto:info@ilog.de)  
**Japan** – ILOG Co., Ltd – Tokyo – Tel: +81 3 5211 5770 – E-mail: [info@ilog.co.jp](mailto:info@ilog.co.jp)  
**Singapore** – ILOG (S) Pte. Ltd. – Singapore – Tel: +65 67 73 06 26 – E-mail: [info@ilog.com.sg](mailto:info@ilog.com.sg)  
**Spain** – ILOG S.A. – Madrid – Tel: +34 91 710 2480 – E-mail: [info@ilog.es](mailto:info@ilog.es)  
**UK** – ILOG Ltd. – Bracknell – Tel: +44 (0) 1344 66 16 00 – E-mail: [info@ilog.co.uk](mailto:info@ilog.co.uk)  
**USA** – ILOG, Inc. – Mountain View, CA – Tel: +1 650 567-8000 – E-mail: [info@ilog.com](mailto:info@ilog.com)  
 Representatives and distributors in other countries

ILOG, CPLEX and the ILOG logotype are registered trademarks, and all ILOG product names are trademarks of ILOG. All other brand, product and company names are trademarks or registered trademarks of their respective holders. The information presented in this brochure is summary in nature, subject to change, non-contractual, and intended only for general information.



Changing the rules of business™