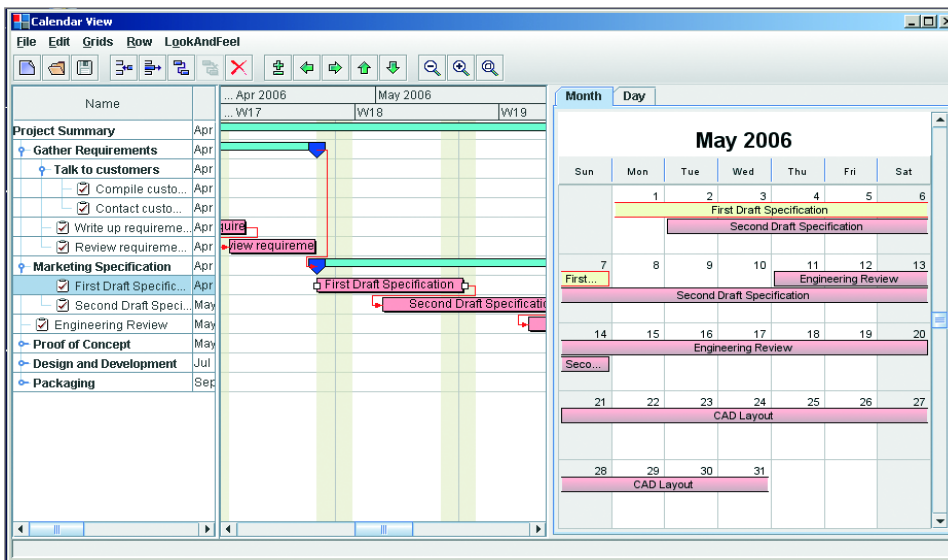


# ILOG JViews Gantt

## Interactive planning and scheduling displays



### Gantt charts for boosting efficiency

Planning and scheduling applications are frequently equipped with timeline displays, called Gantt charts, for viewing and editing the statuses of resources, tasks and activities. Many industry applications, including those for manufacturing, transportation and project management, depend on these charts for organizing operations to boost efficiency. These views show how tasks are allocated with respect to each other, and enable companies to visualize how their resources are being utilized.

### Fast development with little Java coding

ILOG JViews Gantt lets Java developers rapidly build intuitive, interactive Gantt displays that quickly convey complex information. With Designer for Gantt, developers simply select a view type, set its properties, define the rules for highlighting critical values, and connect the resulting Gantt chart to a data source. A complete software development kit (SDK) is included for customizing the exact look and user interactions in the application. Developers get the best of two worlds: rapid development with Designer for Gantt and full display control with the SDK.

### High-performance architecture

ILOG JViews Gantt includes performance features such as fast panning and zooming, optimized filtering and refreshes, and load on demand for large data sets. Data can be displayed in Gantt project- or resource-oriented views, as month or day calendar views, or shown with the calculated critical path. Displays developed with ILOG JViews Gantt can be easily deployed as applets for desktop applications or as Ajax-enhanced interactive DHTML thin clients for the Web.

- **Point-and-click Gantt chart designer**

- **Resource, task, load chart and calendar views**

- **Completely open API**

- **Robust MVC architecture**

- **Smart, Ajax thin clients**

- **Includes ILOG JViews Charts**



## Designer for Gantt

Complete with wizards, Designer for Gantt is a point-and-click display editor. It allows developers to easily specify most aspects of a Gantt display, setting its data source parameters (JDBC, XML, CSV, etc.) and visual properties. Designer also comes with the unique "Style Rule" tool, which lets developers define how graphics will appear on screen under different data conditions. The output of Designer is a project file that is loaded into an application at runtime.

## Powerful MVC architecture

With a Swing-like model view controller (MVC) architecture, ILOG JViews Gantt maintains a clear separation between data and screen representations. The data model is completely open and extensible, enabling it to be connected to other display components. When the data model changes, the connected displays are automatically updated, and when a user interacts with a display, the model changes accordingly.

## Comprehensive set of view types

Operations can require scheduling interfaces specific to different tasks, like viewing factory equipment with their activities or listing activities with their dependencies and time slots. These views can be combined to create custom schedule displays.

- **Activity-oriented chart (Gantt chart)** – Lets users see when tasks are scheduled, as well as the constraints between tasks. This type of chart is often used in project planning tools.
- **Resource-oriented chart (schedule chart)** – Shows the activities and operational times assigned to resources. For example, a factory schedule may show machines and the times they are running.
- **Tree-table view** – Derived from Swing's JTable, it shows resources or activities in rows that can be expanded or collapsed to represent subresources or subactivities.
- **Resource load chart** – Displays how the capacity of a set of resources is being used over time.
- **Calendar views** – Display tasks on traditional month-by-month or day views
- **Critical Path views** – Display the "path" in the schedule in which any task delay will cause an overall delay.

## Other JViews Gantt features

- **Full set of common charts** – ILOG JViews Gantt includes all of ILOG JViews Charts, which is used to support the resource load chart view. It can also be used independently to make other supporting chart displays.
- **Full SDK** – ILOG JViews Gantt comes with a component development class library that allows Java developers to completely customize the chart's look and its user interaction.
- **Power features** – Load-on-demand for seamlessly managing large data sets and all the popular features for handling and viewing data: selection, panning, search, current time indicators, video-like zooming and more.
- **Easy thin-client deployment** – Gantt displays can be easily deployed using JavaServer Faces technology as DHTML thin clients or in portlets. The DHTML clients are Ajax-enhanced to provide end users with the best possible Web user experience.

## ABOUT ILOG

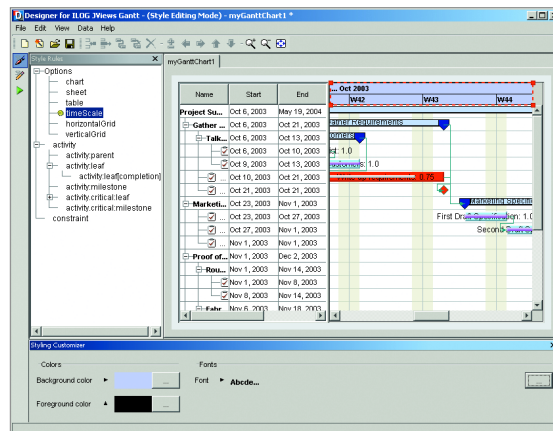
ILOG delivers software and services that empower customers to make better decisions faster and manage change and complexity. Over 2,500 global corporations and more than 465 leading software vendors rely on ILOG's market-leading business rule management system (BRMS), optimization and visualization software components, to achieve dramatic returns on investment, create market-defining products and services, and sharpen their competitive edge. The BRMS market share leader, ILOG was founded in 1987 and employs more than 700 people worldwide.

**ILOG Worldwide Information Center** – Tel: 1-800-FOR-ILOG (US only) or 1-775-881-2800 (International) • URL: <http://www.ilog.com>  
**Australia** – ILOG Pty. Ltd. – Sydney – Tel. +61 (0)2 8249 4355 – E-mail: [info-au@ilog.com](mailto:info-au@ilog.com)  
**China** – ILOG (S) Pte. Ltd. – Beijing Representative Office – Tel. +86 10 8518 1080 – E-mail: [info@ilog.com.sg](mailto:info@ilog.com.sg)  
**France** – ILOG S.A. – Gentilly – Tel: +33 (0)1 49 08 35 00 – E-mail: [info@ilog.fr](mailto:info@ilog.fr)  
**Germany** – ILOG Deutschland GmbH – Bad Homburg v.d.H. – Tel: +49 6172 40 60 – 0 – E-mail: [info@ilog.de](mailto:info@ilog.de)  
**Japan** – ILOG Co., Ltd – Tokyo – Tel: +81 3 5211 5770 – E-mail: [info@ilog.co.jp](mailto:info@ilog.co.jp)  
**Singapore** – ILOG (S) Pte. Ltd. – Singapore – Tel: +65 67 73 06 26 – E-mail: [info@ilog.com.sg](mailto:info@ilog.com.sg)  
**Spain** – ILOG S.A. – Madrid – Tel: +34 91 710 2480 – E-mail: [info@ilog.es](mailto:info@ilog.es)  
**UK** – ILOG Ltd. – Bracknell – Tel: +44 (0) 1344 66 16 00 – E-mail: [info@ilog.co.uk](mailto:info@ilog.co.uk)  
**USA** – ILOG, Inc. – Mountain View, CA – Tel: +1 650 567-8000 – E-mail: [info@ilog.com](mailto:info@ilog.com)  
 Representatives and distributors in other countries

ILOG, CPLEX and the ILOG logo are registered trademarks, and all ILOG product names are trademarks of ILOG. All other brand, product and company names are trademarks or registered trademarks of their respective holders. The information presented in this brochure is summary in nature, subject to change, non-contractual, and intended only for general information.

“ILOG JViews is the most comprehensive Java charting product we’ve found. It reproduces non-Java charts and the complicated graphics we want. We’re constantly looking for more competitive products, but ILOG JViews is still the best choice.”

– Mike Davidson  
 Operations Manager  
 Monitor Management  
 Control Systems, Ltd.



Designer in action

## Learn more

For more information on ILOG JViews Gantt, please visit <http://gantt.ilog.com/>.



Changing the rules of business™