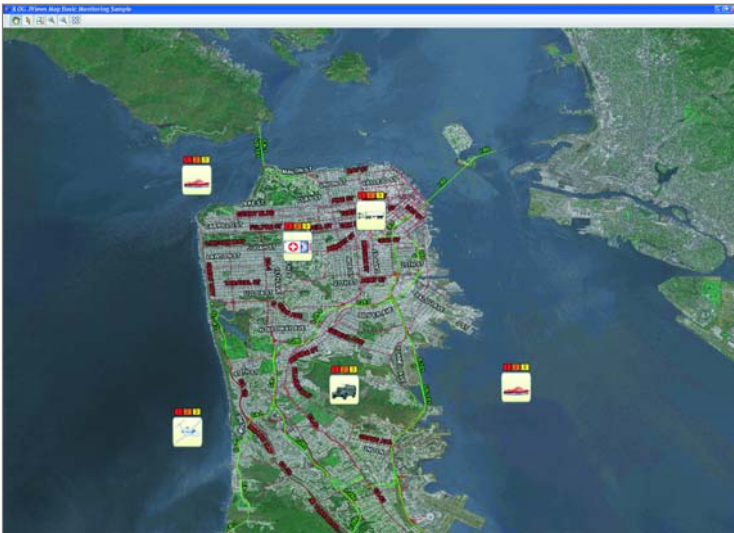


ILOG JViews Maps and ILOG JViews Maps for Defense

Java components and tools for desktop
and Web-based monitoring applications



*ILOG JViews Maps:
Simple monitoring
interface*

Complement geographical information systems (GISs)

Effective asset management requires the ability to pinpoint the exact location of every resource at any given time. This is why ILOG offers two highly accurate mapping products: ILOG JViews Maps for civilian operations and ILOG JViews Maps for Defense for military and homeland security command and control displays. Unlike traditional GISs, which focus on map creation and distributions, ILOG JViews is designed to reuse your preferred GIS data for background maps and create overlays with data-aware symbols depicting your monitored assets.

Video-like graphic performance

To optimize the user experience and maximize CPU savings, ILOG JViews Maps and ILOG JViews Maps for Defense use advanced rendering techniques that include data subsampling, multithreaded load-on-demand functionality and zoom-dependent overlays that deliver fluid map navigation and image rendering of up to 60 frames per second.

Data-aware symbol overlays

ILOG JViews Maps and ILOG JViews Maps for Defense use a model view controller (MVC) approach. As the model changes, displays are updated accordingly. Conversely, every user operation performed on a symbol automatically updates the application data model. For instance, to move an asset on a map, the user simply changes the asset's latitude and longitude properties. The result is one of the most advanced, easy-to-use mapping systems available today.

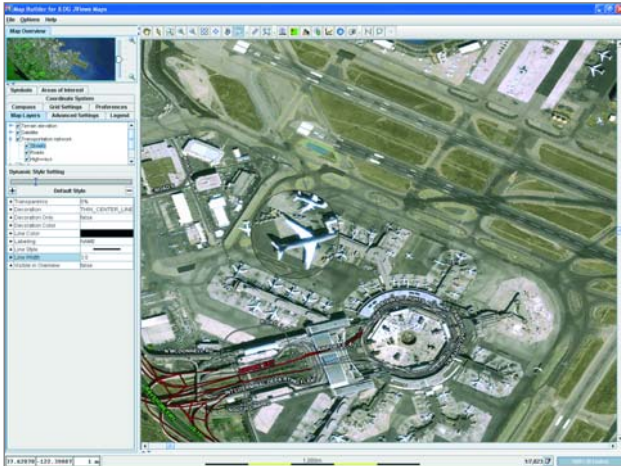
- **Flexible Java™ components**
- **Desktop or Ajax deployments**
- **High-performance map displays**
- **Symbol overlay with tool chain**
- **Extension for defense and homeland security**



Changing the rules of business™

ILOG JViews Maps

Interactive and dynamic location-aware displays



ILOG JViews Maps: Typical map view in Map Builder

Flexible components

ILOG JViews Maps and ILOG JViews Maps for Defense are purely object-oriented toolkits based on advanced design patterns and MVC architecture. Developers can easily combine, customize and subclass any of the numerous provided features to create the exact appearance and behavior needed for a location-based applications. An open architecture facilitates integration with third-party solutions and legacy systems.

Productive tool chain

The ILOG JViews Maps tool chain accelerates prototype development. It includes Map Builder, a tool delivered in source code and built with ILOG JViews Maps libraries. With just a few mouse clicks, you can import map data from a wide variety of formats and parameters, combine them on different layers to mix

both vector and raster data sets, alter the appearance of the map data by changing vectorial data appearance or image attributes such as brightness and contrast, and control the visibility and appearance of different data layers.

To make overlaid symbols, ILOG JViews Maps is shipped with Symbol Editor, a component of ILOG JViews Diagrammer. Starting with graphics from an authoring tool such as Adobe Illustrator, designers and end users can assign behaviors to the graphics and store the resulting symbols in domain-specific palettes for later use. The developer can then use the symbols in assembling the background and foreground of a map with Map Builder, and check their appearance and behavior before extending them with ILOG JViews Maps' component libraries.

Numerous supported map formats

A common hurdle for most monitoring applications is reading map data. ILOG JViews Maps supports many extendible formats:

- Google Earth KML and KMZ files
- OpenGIS WMS online servers
- Integration with Safe Software's FME Engine
- Oracle spatial databases
- ESRI Shape Files (.shp)
- MapInfo (.mif, .mid)
- TIGER/Line (.RTx)
- GeoTIFF with support for tiled maps, JPG in TIF and LZW compression
- Nongeospatial AutoCAD DXF or images in GIF, JPG, PNG or TIF, with easy georeferencing through GUIs

Libraries and tools for building maps

Desktop or Ajax Web deployments

Applications made with the ILOG JViews Maps tool chain can be deployed either as traditional desktop or Ajax-enabled Web-based monitoring solutions. ILOG JViews Maps provides the high performance and ease of use of Google Maps, with excellent server scalability and highly graphical and interactive symbols for monitored assets. These symbols can provide Ajax capabilities that include selection, displacement, off-the-shelf toolbars and contextual menus.



ILOG JViews Maps: Ajax thin-client monitoring

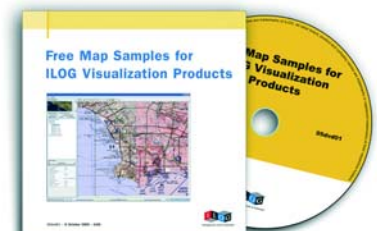
Comprehensive map manipulation and mapping services

ILOG JViews Maps and ILOG JViews Maps for Defense provide numerous ready-to-use GUI beans for viewing maps and managing them with related services:

- Interactive zooming with progressive information display
- Map rotation and panning
- Storage and navigation of areas of interest
- Synchronized overviews, current map scale and zoom to area, layer or fit
- Layers, map data and symbol trees
- Magnifying-glass zooming
- Polyline measurements in orthodromy modes
- Numerous coordinate formatters in DMS Lat/Lon, Decimal Lat/Lon, Geocentric, UTM and Geodesic coordinates, all of which can be dynamically changed during application execution
- Exhaustive and extendible coordinate systems (1,944 predefined coordinate systems with 27 projections, 58 ellipsoids and Molodenski datum)
- Two different measuring units can be used for ground distances and elevations. They can be extended with custom systems and exchanged during application execution.
- Adaptive grids in latitude and longitude or UTM/MGRS reference systems. The grids have no impact on memory and little on performance.
- True geodetic representation and date-line warping
- Map legend generation
- Annotation toolbar for labeling punctual, polyline and area overlays with titles and descriptions

Map DVD-ROM

ILOG JViews Maps comes with a DVD-ROM of raster and vector maps for countries and regions throughout the world.



ILOG JViews Maps for Defense

For military command and control systems

Toolset for map-based military visualization

Extending ILOG JViews Maps, ILOG JViews Maps for Defense can import military map data available in S57, DAFIF, NGA/NIMA VPF/VMAP 0, 1 & 2, ASRP, USRP and CADRG. It supports standard military symbologies and comes with the NATO APP6 Alpha/MIL STD 2525B symbol sets for joint international operations. ILOG JViews Maps for Defense displays the symbols over maps and updates them in real time.

Terrain analysis

ILOG JViews Maps for Defense provides numerous terrain analysis features, including:

- Area of visibility
- Line of sight
- Multisegment terrain cut
- Terrain gradient computation
- Terrain elevated areas and valleys computation
- Sun and shading

Those delivered as plug-ins are designed to work with customer-defined computation algorithms. ILOG JViews Maps for Defense comes with open APIs that can access map model data and preexisting GUI interactors to accelerate development.

3D terrain visualization

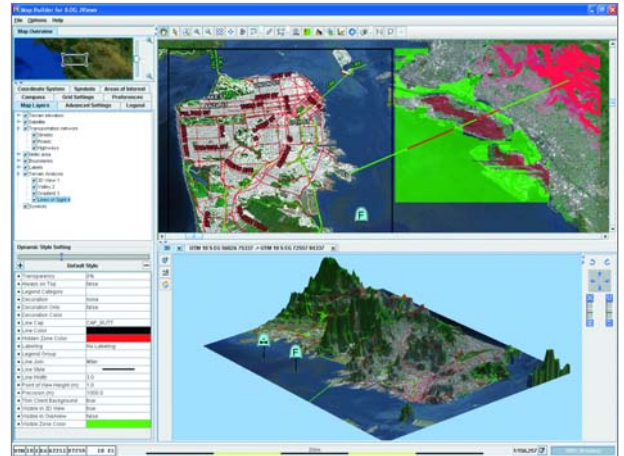
Along with 2D terrain analysis capabilities, ILOG JViews Maps for Defense offers 3D terrain visualization for any displayed map data and can show overlaid symbols as 3D objects. Its unique approach hides 3D complexity, enabling end users to interactively create 3D views of any map area and navigate intuitively. At the same time, no 3D expertise is needed by developers, as all 3D references are given as latitude and longitude coordinates and dimensions in meters. To achieve fast refresh rates, 3D terrain views use adaptive terrain refinement, avoid data duplication with 2D views and are based on OpenGL to leverage graphic acceleration hardware. Precoded capabilities include fly through along polylines and custom 3D objects such as domes and corridors.

ABOUT ILOG

ILOG delivers software and services that empower customers to make better decisions faster and manage change and complexity. Over 2,500 global corporations and more than 465 leading software vendors rely on ILOG's market-leading business rule management system (BRMS), optimization and visualization software components, to achieve dramatic returns on investment, create market-defining products and services, and sharpen their competitive edge. The BRMS market share leader, ILOG was founded in 1987 and employs more than 700 people worldwide.

ILOG Worldwide Information Center – Tel: 1-800-FOR-ILOG (US only) or 1-775-981-2800 (International) • URL: <http://www.ilog.com>
Australia – ILOG Pty. Ltd. – Sydney – Tel. +61 (0)2 8249 4355 – E-mail: info-au@ilog.com
China – ILOG (S) Pte. Ltd. – Beijing Representative Office – Tel. +86 10 8518 1080 – E-mail: info@ilog.com.sg
France – ILOG S.A. – Gentilly – Tel: +33 (0)1 49 08 35 00 – E-mail: info@ilog.fr
Germany – ILOG Deutschland GmbH – Bad Homburg v.d.H. – Tel: +49 6172 40 60 – 0 – E-mail: info@ilog.de
Japan – ILOG Co., Ltd – Tokyo – Tel: +81 3 5211 5770 – E-mail: info@ilog.co.jp
Singapore – ILOG (S) Pte. Ltd. – Singapore – Tel: +65 67 73 06 26 – E-mail: info@ilog.com.sg
Spain – ILOG S.A. – Madrid – Tel: +34 91 710 2480 – E-mail: info@ilog.es
UK – ILOG Ltd. – Bracknell – Tel: +44 (0) 1344 66 16 00 – E-mail: info@ilog.co.uk
USA – ILOG, Inc. – Mountain View, CA – Tel: +1 650 567-8000 – E-mail: info@ilog.com
 Representatives and distributors in other countries

ILOG, CPLEX and the ILOG logotype are registered trademarks, and all ILOG product names are trademarks of ILOG. All other brand, product and company names are trademarks or registered trademarks of their respective holders. The information presented in this brochure is summary in nature, subject to change, non-contractual, and intended only for general information.



ILOG JViews Maps for Defense: Typical command and control display with 3D view

“For mission planning systems, it is critical to use a flexible and high performance system that allows a fast response time: we believe ILOG JViews Maps for defense is the best commercial tool available for that matter.”

– Ignacio Rosell Ráez
 Head of Department
 Mission Support Systems
 EADS Casa

Learn more

For more information on ILOG JViews Maps and ILOG JViews Maps for Defense, please contact an ILOG Sales Representative near you or visit <http://maps.ilog.com> or <http://mapsfordefense.ilog.com>.



Changing the rules of business™