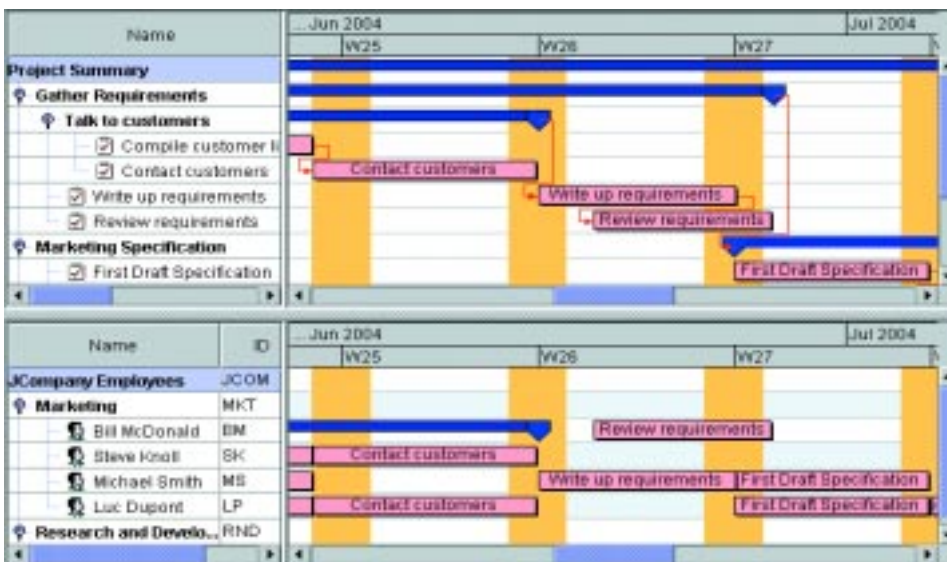


ILOG JViews

Gantt

Interactive planning and
scheduling displays



Gantt charts for boosting efficiency

Planning and scheduling applications are frequently equipped with timeline displays, called Gantt charts, for viewing and editing the statuses of resources, tasks and activities. Many industry applications, including those for manufacturing, transportation and project management, depend on these charts for organizing operations to boost efficiency. These views show how tasks are allocated with respect to each other, and enable companies to visualize how their resources are being utilized.

Fast development with little Java coding

ILOG JViews Gantt lets Java developers rapidly build intuitive, interactive Gantt displays that quickly convey complex information. With Designer for Gantt, developers simply select a view type, set its properties, define the rules for highlighting critical values, and connect the resulting Gantt chart to a data source. A complete software development kit (SDK) is included for customizing the exact look and user interactions in the application. Developers get the best of two worlds: rapid development with Designer for Gantt and full display control with the SDK.

High-performance architecture

ILOG JViews Gantt is designed to handle the requirements of the most demanding applications, with features that include fast panning and zooming, optimized refreshes, and load-on-demand for large data sets. Displays developed with ILOG JViews Gantt can be easily deployed as applets for desktop applications or interactive DHTML thin clients for the Web.

- **Point-and-click Gantt chart designer**
- **Resource, task and load chart views**
- **Completely open API**
- **Robust MVC architecture**
- **Easy thin client deployment**
- **Includes ILOG JViews Charts**



Changing the rules of business™

Designer for Gantt

Complete with wizards, Designer for Gantt is a point-and-click display editor. It allows developers to easily specify most aspects of a Gantt display, setting its data source parameters (JDBC, XML, CSV, etc.) and visual properties. Designer also comes with the unique "Style Rule" tool, which lets developers define how graphics will appear on screen under different data conditions. The output of Designer is a project file that is loaded into an application at runtime.

Powerful MVC architecture

With a Swing-like model view controller (MVC) architecture, ILOG JViews Gantt maintains a clear separation between data and screen representations. The data model is completely open and extensible, enabling it to be connected to other display components. When the data model changes, the connected displays are automatically updated, and when a user interacts with a display, the model changes accordingly.

Comprehensive set of view types

Operations can require scheduling interfaces specific to different tasks, like viewing factory equipment with their activities or listing activities with their dependencies and time slots. These views can be combined to create custom schedule displays.

■ Activity-oriented chart (Gantt chart)

Lets users see when tasks are scheduled, as well as the constraints between tasks. This type of chart is often used in project planning tools.

■ Resource-oriented chart (schedule chart)

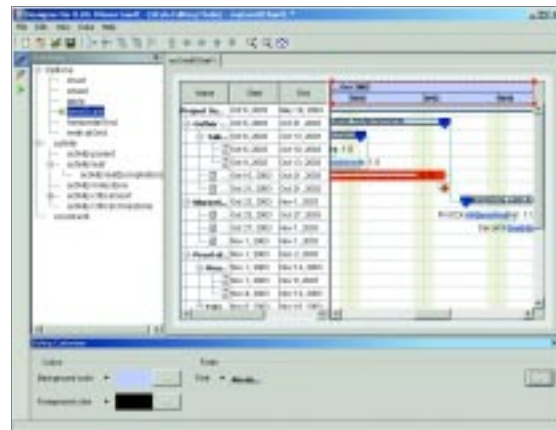
Shows the activities and operational times assigned to resources. For example, a factory schedule may show machines and the times they are running.

■ Tree-table view

Derived from Swing's JTable, it shows resources or activities in rows that can be expanded or collapsed to represent subresources or subactivities.

■ Resource load chart

Displays how the capacity of a set of resources is being used over time.



Designer in action

Other JViews Gantt features

■ Full set of common charts

ILOG JViews Gantt includes all of ILOG JViews Charts, which is used to support the resource load chart view. It can also be used independently to make other supporting chart displays.

■ Full SDK

ILOG JViews Gantt comes with a component development class library that allows Java developers to completely customize the chart's look and its user interaction.

■ Power features

Load-on-demand for seamlessly managing large data sets and all the popular features for handling and viewing data: selection, panning, video-like zooming and more.

■ Easy thin-client deployment

Diagrams can be exported as DHTML or SVG for thin-client deployment. Java Server Pages (JSP) tags ease the design of server-side pages.

■ ABOUT ILOG

ILOG's innovative enterprise-class software components and services have helped companies maximize their business agility and improve operating efficiency for over 10 years. Over 1,000 global corporations and more than 300 leading software vendors rely on ILOG's business rules, optimization and visualization technologies to achieve dramatic returns on investment, create market-defining products and services, and sharpen their competitive edge. For more details, please visit www.ilog.com.

ILOG Worldwide Information Center - Tel: 1-800-FOR-ILOG (US only) or 1-775-881-2800 (International) • URL: <http://www.ilog.com>

China - ILOG (S) Pte. Ltd. - Beijing Representative Office - Tel: +86 10 8518 1080 - E-mail: info@ilog.com.sg

France - ILOG S.A. - Gentilly - Tel: +33 (0)1 49 08 35 00 - E-mail: info@ilog.fr

Germany - ILOG Deutschland GmbH - Bad Homburg v.d.H. - Tel: +49 6172 40 60 - 0 - E-mail: info@ilog.de

Japan - ILOG Co., Ltd - Tokyo - Tel: +81 3 5211 5770 - E-mail: info@ilog.co.jp

Singapore - ILOG (S) Pte. Ltd. - Singapore - Tel: +65 67 73 06 26 - E-mail: info@ilog.com.sg

Spain - ILOG S.A. - Madrid - Tel: +34 91 710 2480 - E-mail: info@ilog.es

UK - ILOG Ltd. - Bracknell - Tel: +44 (0) 1344 66 16 00 - E-mail: info@ilog.co.uk

USA - ILOG, Inc. - Mountain View, CA - Tel: +1 650 567-8000 - E-mail: info@ilog.com

Representatives and distributors in other countries

ILOG, CPLEX and the ILOG logotype are registered trademarks, and all ILOG product names are trademarks of ILOG. All other brand, product and company names are trademarks or registered trademarks of their respective holders. The information presented in this brochure is summary in nature, subject to change, non-contractual, and intended only for general information.

"ILOG JViews is the most comprehensive Java charting product we've found. It reproduces non-Java charts and the complicated graphics we want. We're constantly looking for more competitive products, but ILOG JViews is still the best choice."

– Mike Davidson

Operations Manager
Monitor Management
Control Systems, Ltd.

Learn more

For more information on
ILOG JViews Gantt, please visit
<http://gantt.ilog.com/>.



Changing the rules of business™