

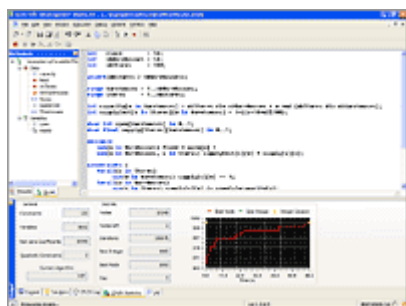
# connection

fresh ideas to change the rules of business



**Editorial**  
**Lloyd Clarke**  
**Product Manager**  
**ILOG CPLEX**

ILOG Optimization Decision Management System(ODMS)  
ILOG CPLEX . , 100  
1,000 500  
ILOG CPLEX . ILOG CPLEX  
, ILOG CPLEX ILOG ODMS  
ILOG OPL Development Studio  
ILOG Optimization Decision Manager



**ILOG CPLEX 10.0**  
**Get optimal faster**

ILOG CPLEX 10.0 35  
70

ILOG CPLEX 10.0 Solution  
Polishing . Solution Polishing

ILOG CPLEX  
ILOG OPL Development Studio

[Click to enlarge](#)

(opens a new window)

, 90

10

, ILOG CPLEX 10.0

Solution Polishing



가

ILOG CPLEX 10.0

::

- **Conflict Refiner-** 가
- **Indicator Constraint -**
- **MIP Starts -** , , " "
- **Java Serialization - J2EE** 가

<http://cplex.ilog.com>

### CUSTOMER SPOTLIGHT

CitiStreet

#### The rules of benefits

9 2150 CitiStreet 가  
 benefit delivery . CitiStreet ([www.citistreetonline.com](http://www.citistreetonline.com))  
 90 . Benefit 가  
 . ILOG JRules CitiStreet  
 ,  
 2000 benefit ,  
 CitiStreet BRMS( ) ILOG JRules ,  
 CitiStreet  
 ,  
 CitiStreet Andy Marsh  
 “ . Benefit 가  
 가  
 . ILOG JRules ,



Economical Insurance Group

Yes! Yes! Yes!

가

“no”

“yes”

Economical Insurance Group (Economical: [www.economicalinsurance.com](http://www.economicalinsurance.com))

BRMS (

) ILOG JRules

17

33

Economical

가

. Economical

가,

ILOG JRules

ILOG JRules

Economical

, BRMS

가

Economical

CIO John Martin

.”

, Economical

IT

.”

**Option One Mortgage Corporation**

**Streamlined mortgage lending**

Option One Mortgage Corporation ([www.oomc.com](http://www.oomc.com)) ILOG JRules H&R Block Option One Mortgage

Option One ILOG Professional Service ILOG JRules Option

Option One BRMS

24

Option One

Option One CIO Allan Lubits

“ ILOG JRules ILOG ”

**Vodafone Spain**

**Keeping customers on the line**

가

Vodafone Spain ([www.vodafone.es](http://www.vodafone.es))

ILOG JRules , Vodafone Spain 1000

“Churn” 가

Vodafone ILOG JRules Vodafone Spain

. ILOG JRules

Vodafone Spain  
Vodafone D2

Vodafone Group Plc.,  
ILOG JRules



BHP Billiton  
Ore to order

([www.bhpbilliton.com](http://www.bhpbilliton.com))

BHP Billiton

ILOG CPLEX

ILOG CPLEX , BHP Billiton

what-if

BHP Billiton 5

### PARTNERS NEWS

IBM

Another first for ILOG

ILOG  
Server ILOG JRules

IBM WebSphere® Process



ILOG 가 , ILOG JRules IBM WebSphere  
Process Server

(BRMS)가

ILOG IBM WebSphere Process Server

2000

. IBM

WebSphere Enterprise Service Bus

, IT 가

ILOG JRules

IBM

ILOG JRules

ILOG JRules

ILOG 4 IBM

ILOG IBM Websphere MQ Workflow  
, IBM



HandySoft

**BizFlow at the next level**

HandySoft BizFlow  
(BPM)

BizFlow

(BRMS)

ILOG JRules

HandySoft Global Corporation ([www.handysoft.com](http://www.handysoft.com)) BPM

BizFlow

ILOG JRules BizFlow

BPM

ILOG JRules

BizFlow

BPM

BizFlow

ILOG HandySoft

가

ILOG JRules

BPM

가 가

SOA

**PRODUCT CERTIFICATION**

ACORD

XML for life

XML  
(BRMS) . : ACORD  
XML BRMS ILOG  
JRules



ACORD (The Association for Cooperative Operations Research and Development: [www.acord.org](http://www.acord.org))

. ACORD  
XML ACORD  
XML 30%

ILOG JRules ACORD XML for Life certification ACORD XML  
BRMS 가 가  
ILOG 2004 ACORD XML  
certification ACORD XML certification . ILOG JRules  
IT , ILOG JRules  
ILOG JRules

ACORD Denis Garth . “ ACORD ILOG ACORD  
XML , ILOG  
”

**SERVICE NEWS**

Customer support

Service 'à la carte'

ILOG  
ILOG  
가  
가



가  
, email 12

ILOG 가 , 24  
ILOG 4 가

ILOG Michel Weinberg “  
가 .”

[www.ilog.com/corporat/support](http://www.ilog.com/corporat/support)

**PRODUCT NEWS**

ILOG JRules Rule Scenario Manager

Make applications work the first time

가  
. ILOG

JRules Rule Scenario Manager (RSM)



ILOG JRules

ILOG JRules RSM makes testing rules easy

[Click to enlarge](#)

(opens a new window)

ILOG JRules RSM

ILOG JRules

what-if

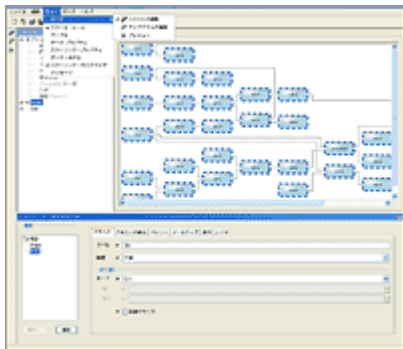
가 ,

ILOG JRules

ILOG JRules

GUI

<http://jrules.ilog.com>



### ILOG Visualization

#### Expanding the possibilities

ILOG

가

Studio 2005 (.NET 2.0)

ILOG

Visual

Workflow diagram in Japanese

[Click to enlarge](#)

(opens a new window)

- **ILOG JViews 6.5 in Japanese**

ILOG

ILOG

ILOG

ILOG JViews 6.5

ILOG

- **ILOG Views 5.1 ported to new Red Hat Linux**

ILOG

가

ILOG

32

64

RedHat

Enterprise Linux 4.0

ILOG Views 5.1

C++

, GCC 3.4

- **ILOG Gantt for .NET 3.0 ported to Visual Studio 2005 (.NET 2.0)**

2006 1

ILOG Gantt for.NET

Visual Studio

2005

. Gantt Chart .NET

가

ILOG

, ILOG JViews BPMN Modeler

가 가

<http://bpmmodeler.ilog.com>

Business Process Management Notation (BPMN)

ILOG

<http://visualization.ilog.com>

### COMPANY NEWS

New online demo

Changing BPM's rules

(BPM)

500

ILOG

(BRMS)



Become a BPM-BRMS expert

“BRMS BPM

ILOG

15

BPM

ILOG BRMS 가

, ILOG 가

ILOG

BPM

ILOG BRMS 가

BPM

BPM

BRMS

BPM

ILOG

ILOG BPM/SOA

Alain Gendre

“ ILOG 가 BPM

ILOG 가 BPM

”

“Changing the Rules of BPM with BRMS”

<http://bpmdemo.ilog.com>



**ILOG Australia**

**ILOG in the land of Oz**

ILOG 가

ILOG 10

가 가

IT

, ILOG CPLEX, ILOG JRules

. No. 3 Spring ILOG

10 ILOG Stéphane Marouani 가

ILOG

ILOG ILOG

.ILOG CPLEX

, ILOG JRules

Mr. Marouani

. “ ILOG

ILOG

가 . ILOG

가

.” 61 (0)2 8249 4355 /

email [info-au@ilog.com](mailto:info-au@ilog.com)

ILOG

**APICS 2005**

**The next generation**

ILOG APICS 2005

ILOG Plant

PowerOps (PPO)

. ILOG Plant PowerOps (PPO)

. APICS (the

Association for Operation Management: [www.apics.org](http://www.apics.org))

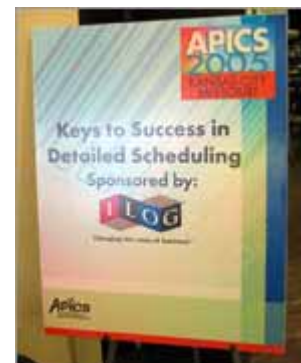
가

. 2005 10 ,

APICS 3

2,500

가



ILOG

ILOG PPO

. ILOG

Thomas Dong

Chris Hane

”

Thomas Dong

Chris Hane

10 가

[www.ilog.com](http://www.ilog.com)

### INDUSTRY FEATURE

ILOG Fab PowerOps

Breakthrough for fabs

“Fabs”



가

Fab

Fabs

lot

ILOG's answer

ILOG Fab

, ILOG Fab PowerOps (FPO)

. ILOG FPO

Fab

ILOG FPO

. ILOG FPO

가

- **Scheduling Engines** – Diffusion, Photolithography, Thin Films, Etch, CMP (Chemical Mechanical Polishing), Implant Fab
- **Analyzer** – , GUI
- **Backbone** – ILOG FPO , GUI

ILOG FPO

Fab

<http://fpo.ilog.com>

## ABOUT KSTEC

1998 BRE ( ) ( )  
 (ILOG) , Optimization ILOG CPLEX  
 , BRE ( ) BRE  
 . KSTEC RTS (Real Time Scheduler) Package Scheduling  
 System , LG , LG Phillips, POSCO, , KT, SKT, ,  
 , , 150

## ABOUT ILOG

ILOG 10  
 . 1,000 300 ILOG  
 , ROI  
[www.ilog.com](http://www.ilog.com)

**ILOG Worldwide Information Center - Tel: 1-800-FOR-ILOG (US only) or 1-775-881-2800 (International) - URL: <http://www.ilog.com>**  
 France - ILOG S.A. - Gennevilliers - Tel: +33 (0)1 49 08 35 00 - Email: [Email: info@ilog.fr](mailto:Email: info@ilog.fr)  
 China - ILOG (S) Pte. Ltd. - Beijing Representative Office - Tel: +86 10 65391108 - Email: [Email: info@ilog.com.sg](mailto:Email: info@ilog.com.sg)  
 Germany - ILOG Deutschland GmbH - Bad Homburg v.d.H. - Tel: +49 6172 40 60 - 0 - Email: [Email: info@ilog.de](mailto:Email: info@ilog.de)  
 Japan - ILOG Co., Ltd. - Tokyo - Tel: +81 3 5211 5770 - Email: [Email: info@ilog.co.jp](mailto:Email: info@ilog.co.jp)  
 Singapore - ILOG (S) Pte. Ltd. - Singapore - Tel: +65 67 73 06 26 - Email: [Email: info@ilog.com.sg](mailto:Email: info@ilog.com.sg)  
 Spain - ILOG S.A. - Madrid - Tel: +34 91 710 2480 - Email: [Email: info@ilog.es](mailto:Email: info@ilog.es)  
 UK - ILOG Ltd. - Bracknell - Tel: +44 (0) 1344 66 16 00 - Email: [Email: info@ilog.co.uk](mailto:Email: info@ilog.co.uk)  
 USA - ILOG, Inc. - Mountain View, CA - Tel: +1 650 567-8000 - Email: [Email: info@ilog.com](mailto:Email: info@ilog.com)  
 Representatives and distributors in other countries

ILOG, CPLEX and the ILOG logo type are registered trademarks, and all ILOG product names are trademarks of ILOG. All other brand, product and company names are trademarks or registered trademarks of their respective holders. The information presented in this brochure is summary in nature, subject to change, non-contractual, and intended only for general information.